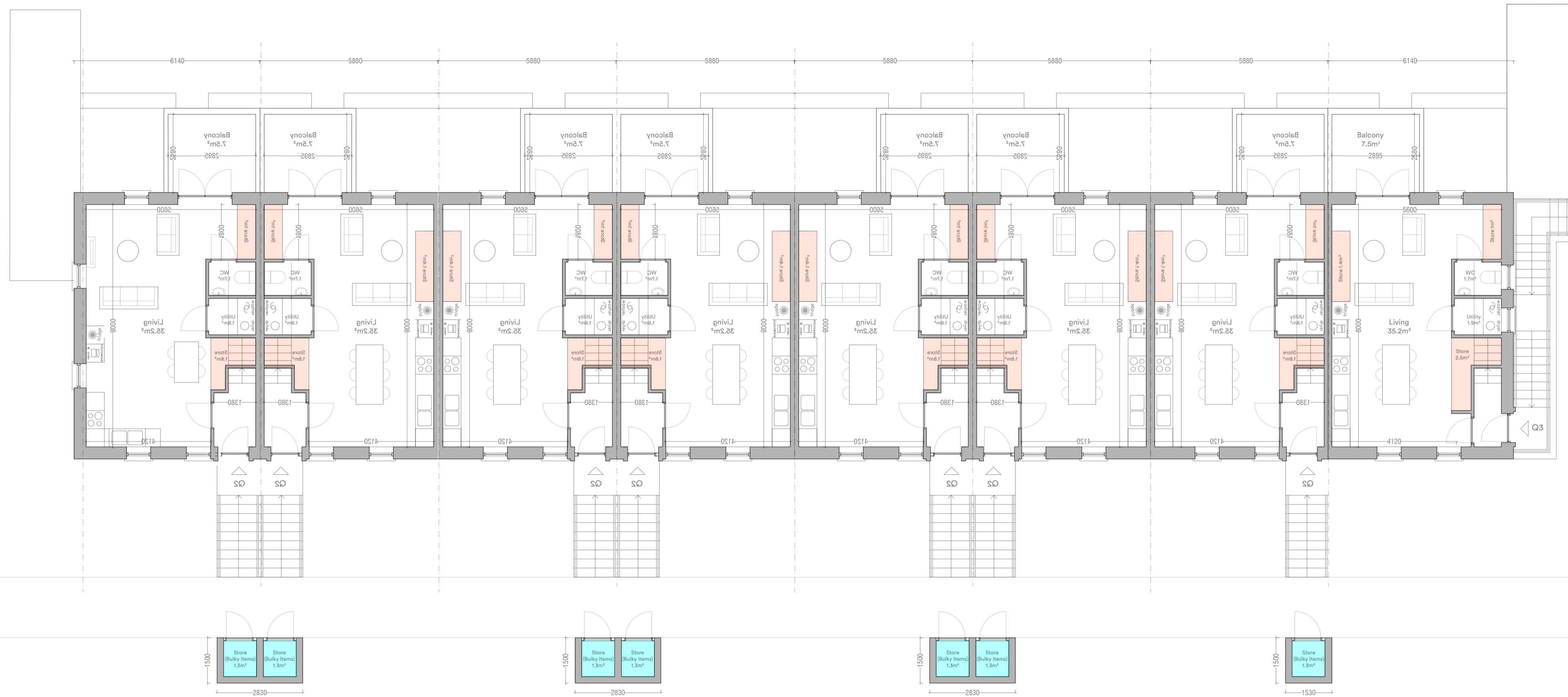




View of Bulky Storage to Front of Duplex Entrance



View of Bulky Storage to Side Access Duplex



Duplex Block B First Floor

Response to RFI Item 1 (c)

- Storage areas provided in line with Appendix 1 of Sustainable Urban Housing: Design Standards for New Apartments 2023
- Storage area for bulky items provided in line with Section 3.32 of Sustainable Urban Housing: Design Standards for New Apartments 2023 (Surplus to minimum standard storage provision)

Response to RFI Item 1 (d)

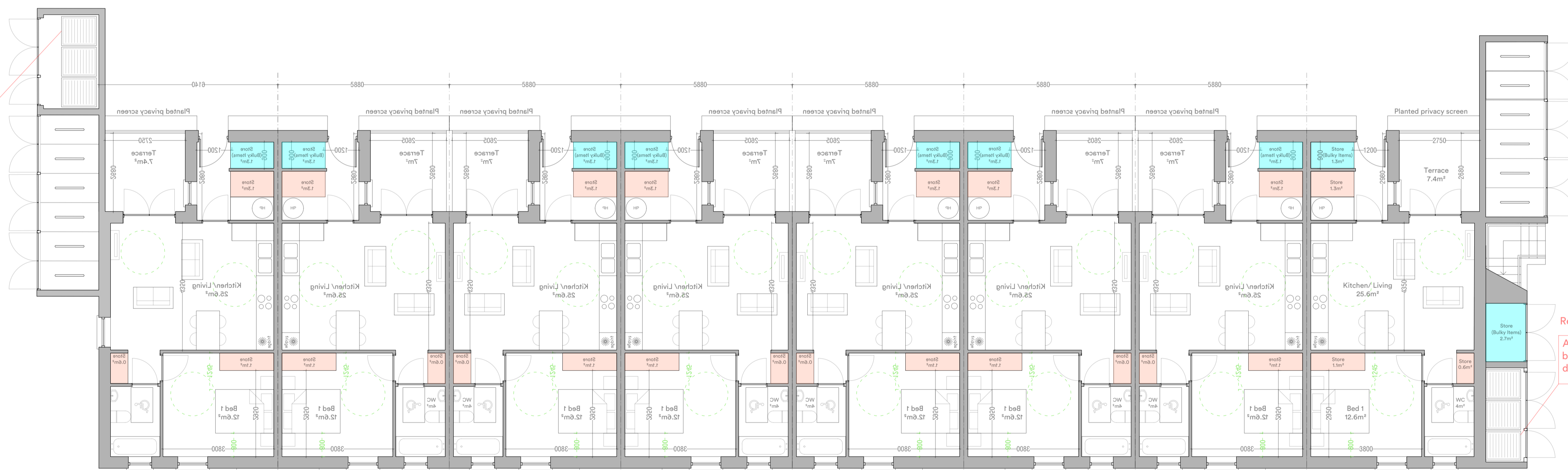
A communal 3 bin system has been provided for the apartment dwellings proposed

Type Q1		
1 Bed / 2 Person		
Total Floor Area	52.7m ²	(45m ²)
Total Living Area	25.6 m ²	(23m ²)
Total Bedroom Area	12.6m ²	(11.4m ²)
Total Storage Area	4.3m ²	
Standard Storage Area	3m ²	(3m ²)
Bulky Storage Area	1.3m ²	
Private Amenity	7m ²	(5m ²)

Type Q2		
2 Bed / 4 Person		
Total Floor Area	89.6m ²	(73m ²)
First Floor Area	44.8m ²	
Second Floor Area	44.8m ²	
Total Living Area	35.2m ²	(30m ²)
Total Bedroom Area	26.7m ²	(24.4m ²)
Total Storage Area	9.5m ²	(6m ²)
Standard Storage Area	6.3m ²	(6m ²)
Bulky Storage Area	4.8m ²	
Private Amenity	7m ²	(7m ²)

Type Q3		
2 Bed / 4 Person		
Total Floor Area	89.6m ²	(73m ²)
First Floor Area	44.8m ²	
Second Floor Area	44.8m ²	
Total Living Area	30m ²	(30m ²)
Total Bedroom Area	25.7m ²	(24.4m ²)
Total Storage Area	9.5m ²	(6m ²)
Standard Storage Area	6m ²	(6m ²)
Bulky Storage Area	6.2m ²	
Private Amenity	7.4m ²	(7m ²)

Duplex Block B Ground Floor



Response to RFI Item 1 (d)

A communal 3 bin system has been provided for the apartment dwellings proposed

Minimum standards shown in parentheses
Refer to site layout for handing and orientation